

FOR LEASE

Parkview Point



950 Lumsden Road
Brandon, Florida 33511

DEMOGRAPHICS

| | 1 mile | 3 mile | 5 mile |
|-------------------|----------|----------|----------|
| Population | 11,395 | 92,872 | 206,211 |
| Average HH Income | \$62,620 | \$67,949 | \$70,412 |
| Median Age | 34 yrs | 35 yrs | 36 yrs |

PROJECT/MARKET HIGHLIGHTS:

- New premier 4 individual building complex
- Excellent location - Near the new entrance to the Brandon Main St.
- All units front on Lumsden Road with 3 access points
- High traffic count on Lumsden Road - over 45,000 per day
- Easy access for both East and West bound traffic
- Premium construction quality with professional landscaping
- Current Tenants: Dunkin' Donuts, Radiance Tanning, We the People, Goin' Postal, Dentist & Chiropractor



FOR MORE INFORMATION CONTACT:

Kalyn Brandewie
kalyn@floridaretailpartners.com

Stuart Segall
stuart@floridaretailpartners.com

FLORIDA
RETAIL PARTNERS
LICENSED REAL ESTATE BROKER

813-251-3333

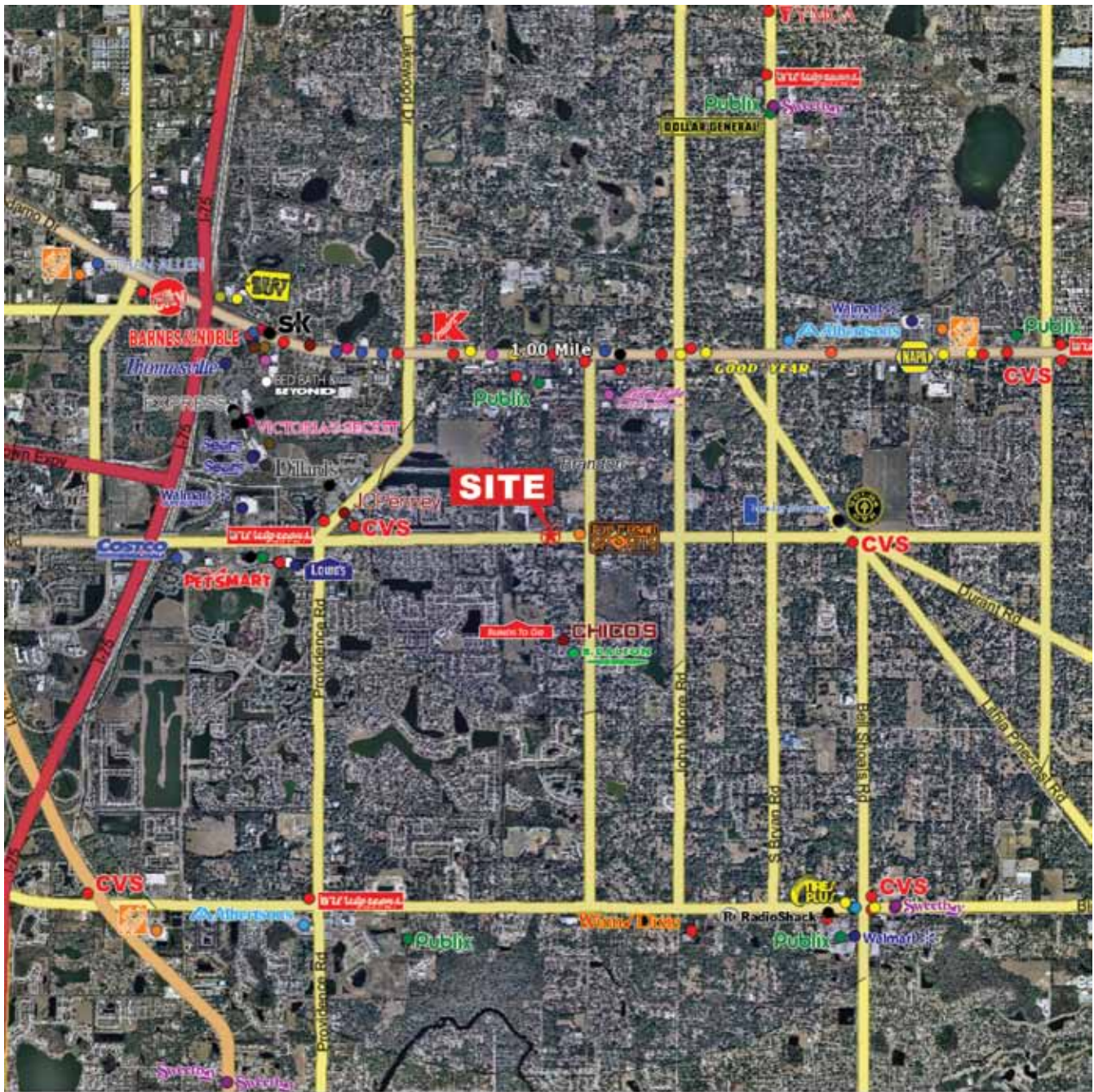
www.floridaretailpartners.com

2202 S. MacDill Avenue | Tampa, Florida 33629
813-251-3334 FAX

950 Lumsden Rd.
Brandon, Florida 33511

FOR LEASING INFORMATION CONTACT:

Kalyn Brandewie
or Stuart Segall
813-251-3333



Demographic Source: Applied Geographic Solutions / TIGER Geography

©2009 Sites USA Inc., Chandler, AZ (480) 491-1112. All Rights Reserved.

950 Lumsden
Brandon, FL



June, 2009

2202 S. MacDill Avenue • Tampa, Florida 33629 • 813-251-3334 FAX

www.floridaretailpartners.com